



Fairfield Farm College is a Specialist College for students with learning difficulties and disabilities; it is a registered Charity, with residential, day and weekend courses. You can join the Vocational and Independence Training course when you are between 16 and 19 years old, but can join when older providing you have completed your course before your 25th Birthday.

We are situated in the village of Dilton Marsh in Wiltshire. Our 26-acre farm site includes well-resourced teaching and vocational learning areas, a student common room, conference room, café, farm shop and a multi use games area. We offer residential programmes delivered in our four houses in the village.

When you start at the College, you will take part in an induction course where you can try all of our subjects to help us develop a programme with you that meets your goals and longer term aspirations.

This includes:

- Independence Training and Personal, Social and Health Education, (PSHE)
- Vocational learning (engineering, animal studies, horse studies, horticulture, outdoor learning, art and design, sport and exercise)
- Communication, Literacy, Numeracy and IT skills (embedded in all areas)

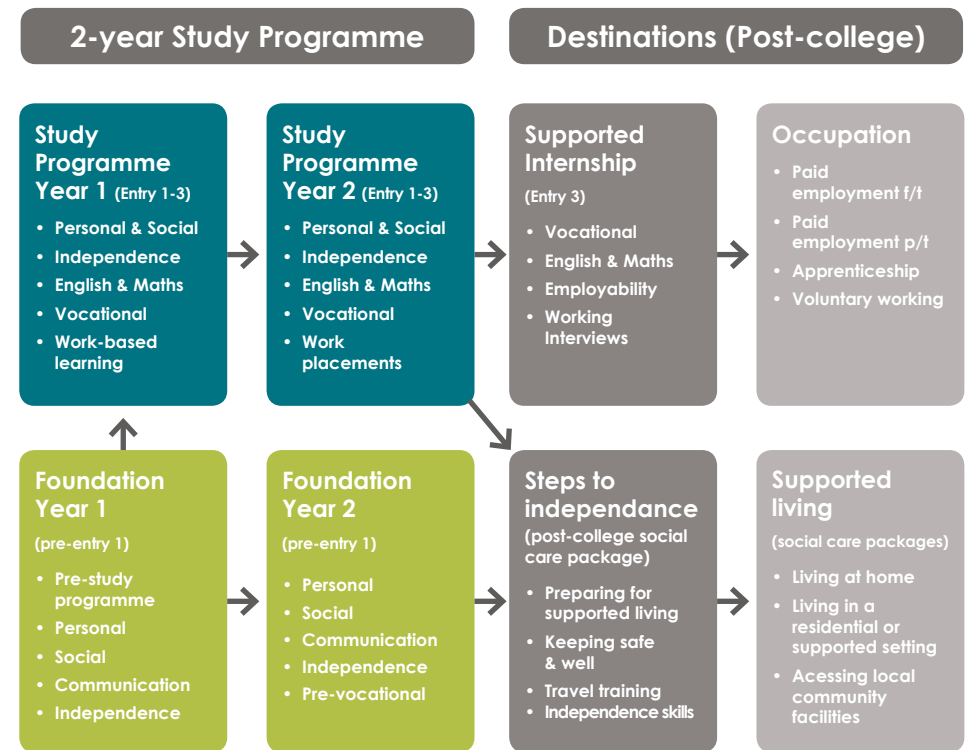
- Work-based learning (café, retail, catering, customer care and office skills)
- External work experience, initially with an appropriate level of support
- Advice and Guidance available from our living and learning coach

Fairfield Farm College is committed to promoting equality, eliminating discrimination and encouraging diversity amongst staff and students. For further information please see the college's Equality and Diversity policy and related documents on our website. We are graded Good by OFSTED in every area. Inspection reports are available on the OFSTED website.



Students will follow a study programme which will enable them to build upon and learn new skills and knowledge in order to support their educational and career aspirations. All our programmes of learning will be appropriately challenging with a focus on individual progression. The core elements of our

study programme include vocational pathways, relevant aspects of English and maths, independence skills, tutorials, enrichment activity and work experience or work related activity. We offer externally accredited units of work via nationally approved awarding organisations at Entry Level.



 We provide our students with opportunities to learn new skills to prepare them for adult life, living and working in the community

VOCATIONAL LEARNING

Engineering

The aim of the course is to develop practical skills in metalwork and basic vehicle maintenance. You will learn Health and Safety in the workshop.

The engineering department maintains college equipment. For example you will learn to wash and valet vehicles, repair and maintain basic farm machinery.

You will have the opportunity to work as part of a team on large projects like refurbishing a farm trailer, making a trailer for the mini-tractor or making items for the college and college houses. You will also be able to work on individual projects, such as making a candle holder or a project of your own design.

You may learn to drive the mini-tractor and use it for a range of tasks on the college site.

Work Experience

- Internal - working on real projects around the college
- External - working at Halfords, in a garage or workshop

Progression Opportunities

- Level 1 course at mainstream college, if appropriate
- Paid or supported employment or voluntary work in a garage or workshop



Horticulture

The aim of the course is to learn about plants, how to grow them and Health and Safety in the garden. You will learn to sow seeds, prick out seedlings, identify parts of a plant, plant out, weed, feed, water and harvest a range of vegetables.

You will help to plan what we grow in each plot and select produce to be sold in the farm shop or used in the kitchen as well as help maintain the gardens at the college houses.

You will learn to identify and use a range of hand tools as well as using a petrol mower and cultivator under supervision.

Work Experience

- Internal - growing plants to sell in the college farm shop as well as for planting in college house gardens.
- External - undertaking projects in the community, including: conservation work, working in a local quarry, undertaking work experience at Palmer Gardens (Shaw Trust)

Progression Opportunities

- Level 1 course at mainstream college, if appropriate
- Paid or supported employment or voluntary work in a Garden Centre or for a Gardener/Landscaping Company



Animal Management

You will learn to look after animals and the land as well as Health and Safety. Sometimes you may see animals born. You will meet the vet and sheep/alpaca shearer and see them working.

You will learn to handle, restrain and groom the animals. You will learn how to health check an animal and what to do if you suspect an animal is unwell. You will learn about the importance of hygiene when working with animals.

Work Experience

- Internal - real projects around the college site
- External - caring for animals at the Hope Nature Centre. Working at Mole Valley Farmers

Progression Opportunities

- Level 1 course at mainstream college if appropriate
- Paid or supported employment or voluntary work in an animal park or farm
- Working in an agricultural retail outlet



Horse Studies

You will learn stable management, horse riding and Health and Safety when dealing with horses.

You will learn to groom, muck out and feed the horses. You will learn to clean tack and find out about First Aid for horses. You will meet the vet and the farrier and see them working.

You will learn to ride the college horses in our outdoor arena. You may enter local horse shows and perhaps win a rosette!

Work Experience

- Internal - working on real projects within the equestrian unit and/or riding, preparing for and competing in local horse shows, helping to organise the college's annual Horse (and Dog) Show
- External - working at a local stables

Progression Opportunities

- Level 1 course at mainstream college, if appropriate
- Paid or supported employment or voluntary work in an equestrian setting



VOCATIONAL LEARNING

Art and Design

You will explore art and artists from around the world. You will have the opportunity to undertake self-directed study within a chosen topic using different mediums.

You will learn about the principles of colour theory and apply it to your work. Techniques such as water colour, pastel, clay work and collage will be covered.

There is an opportunity to display work to be viewed by the public. On completion of the course, you will have a folder full of your master pieces on the topics you have undertaken.

Work Experience

- Internal - working on real projects on college site, in college houses and undertaking projects in the community including exhibiting work alongside other local artists

Progression Opportunities

- Level 1 course at mainstream college, if appropriate
- Recreational courses, clubs and activities
- Producing pieces to sell



Sport

You will learn about the importance of physical exercise to enable you to keep fit as well as take part in a range of sport and activities for fun and relaxation.

You will use the 3G multi-use games area for outdoor fun as well as the hall for indoor activities.

You will find out about local sporting opportunities.

You can also take part in music and movement and dance sessions, learning new skills. Some students swim regularly off-site as well as accessing a local gym for trampolining and gymnastics.

Work Experience

- Internal - working with the Inclusive Sports Coordinator on county wide events.

Progression Opportunities

- Level 1 course at mainstream college, if appropriate
- Recreational courses, clubs and teams
- Paid or supported employment or voluntary work in a leisure centre or gym



WORK-BASED LEARNING

Catering

In the college kitchen you will learn about food and planning meals. You will prepare lunch for everyone. You will help to make cakes, bread and other products that will be sold in the farm shop and café.

You will learn how to lay tables, use a range of kitchen equipment and prepare a variety of foods. You will learn about Health and Safety in the kitchen, working as a team and completing real tasks.

Work Experience

- Internal - preparing lunches, buffets and catering for the college conference venue as well as working closely with college Café staff
- External - working in the kitchen and serving customers at the Hope Nature Centre Squirrels Tea Room

Progression Opportunities

- Level 1 course at mainstream college, if appropriate
- Paid or supported employment or voluntary work in a food outlet



Café

When you work in the café you will learn about preparing food and food hygiene. You will learn about Health and Safety in the kitchen, communication skills and customer care.

You will serve behind the counter, take orders from customers, use the till, prepare food and drinks. You will learn to clear tables and use the dishwasher and gain an understanding of environmental health requirements for a business selling food to the public.

Work Experience

- Internal - running day to day aspects of the college café, preparing food and drinks and serving customers
- External - Working in the kitchen and serving customers at the Hope Nature Centre Squirrels Tea Room

Progression Opportunities

- Level 1 course at mainstream college, if appropriate
- Paid or supported employment or voluntary work in a Café, fast food outlet or restaurant



WORK-BASED LEARNING

Retail and Enterprise

When you work in the college farm shop and post office you will learn how to order and price stock, check deliveries, stock shelves, look after plants, create displays and use the scales and the till to serve customers.

You will learn about Health and Safety in the shop, how to present yourself, communication skills and the importance of customer care.

All of these skills will give you a range of opportunities to find work in a wide range of shops and help you to work with the public.

Work Experience

- Internal - real working projects on the college site, including growing plants for selling through the college farm shop
- External - Work experience at Palmer Gardens (Shaw Trust)

Progression Opportunities

- Paid or supported employment or voluntary work in a Farm Shop, Garden Centre or other retail outlet

Customer Care and Office Skills

When you work in the college office skills area you will be the first point of contact for telephone enquiries and greeting visitors.

You will learn to answer the phone, use the computer, producing essential documents for the college such as letters and posters, you will then email or post them out to customers.

You will liaise with staff to provide support such as creating stationery orders, placing the order, checking and delivering the order, distributing post and parcel deliveries.

Work Experience

- Internal – running day to day aspects of the college reception and providing administrative support to college staff
- External – office placements

Progression Opportunities

- Level 1 course at mainstream college, if appropriate
- Paid or supported employment or voluntary work in a reception, office or administrative environment

OTHER SKILLS

Outdoor Learning

You will find out about outdoor living through the activities we undertake on and off the farm. Within our outdoor learning sessions you will learn how to build shelters, make fires, forage for foods and cook outdoors.

You will discover navigation techniques and visit a range of different environments in which to practice your new skills. You will learn about the safe use of a wide range of outdoor tools and equipment as well as the storage and maintenance of these items.

You will develop a sense of self reliance and learn the importance of teamwork as well as independent thinking and problem solving to achieve your goals in the outdoors. You can apply these values and skills to other areas of your day to day life.

Progression opportunities

The personal development and confidence learned in the outdoor environment will be of use in other areas of your day to day life such as future paid employment.

Independent Living

You will follow an Independence Skills programme throughout your course. You will learn about safety in the home and healthy living. You will work on the college site, in the college houses and in the local community.

Topics covered will include: personal care skills, laundry, household tasks, basic cookery and road crossing. Later you will learn to use public transport to access local shops and amenities, you will work on budgeting and cooking for yourself.

Outcomes

- Healthy living
- Personal safety
- Road crossing
- Basic cooking
- Health and hygiene in the home

Progression Opportunities

- Undertaking this training prepares you to become less reliant on support from others, preparing you for adult life in the community including supported/ independent living, being able to access the local community and keeping yourself healthy and safe



OTHER LEARNING

Work Experience

Whilst you are at college you will have the opportunity to undertake a work experience placement (with support if you need it). You may work as part of a group on a conservation project at a local quarry or at a country park.

You may go on weekly work placements to a café, retail outlets, a riding stables, garden centre, school or museum. All places are flexible to meet individual needs.

Advice and Guidance

You will be supported to find out about opportunities that will be available to you in the future and plan your course at this college to help you to achieve your long-term goals. College staff will support you to plan your transition for after you leave Fairfield.

Personal Development and Wellbeing

Personal development and wellbeing is a core subject to support you to understand your body, health and relationships in order to keep yourself safe and well.

Skills for Life

You will improve your communication, literacy, numeracy and IT skills as part of every subject in all areas of the college curriculum where you could achieve a qualification.

Therapies

The College can access Speech and Language as well as Occupational Therapy as required. The college has two part-time counsellors.

Social Life

The college arranges a wide variety of educational and social trips as well as a youth club, for all Fairfield Farm Students whether you are a day or residential student.

The Student Council, which consists of all students and staff meets each Monday morning to exchange plans for the week's extra-curricular activities. Regular off-site activities include: Archway Club, church, discos, barbecues, museums, horse shows, exhibitions, countryside shows and visits to other farms.

RESIDENTIAL LIVING

Residential Learning (college)

If you are approved by your home Local Authority, full-time residential is available as part of your college programme. You will live in one of the college houses which is within a few minutes walk of the College site. You will develop initiative, manage your own safety and leisure time and develop your social skills.

You will learn about personal hygiene, money skills, household tasks, cooking, road crossing, independent travel, personal safety, managing medication and health needs. You will share household tasks and cooking meals.

There is 24-hour support in each house, this includes sleep-in support. You will get to know the support workers based in your house very well. You will not be left alone in the houses until you have achieved your 'Home Alone' qualification. A member of staff always accompanies you until you have gained your 'Road Crossing' certificate.

All college houses are registered Care Homes with the Care Quality Commission (CQC). They are inspected regularly and inspection reports are available on the CQC website.

STEPs to Independence

Aimed at supporting young people with learning disabilities to transition to supported living.

The programme empowers young people with varied support needs to live as independently as possible. There are a range of flexible programmes both short and long-term that include support to:

- Learn to live in shared accommodation
- Progress to a supported 1-bedroom flat
- Transition to long-term settings
- Manage free time
- Access leisure activities
- Access work-based learning
- Access work experience
- Gain employment (paid/voluntary)

All staff are qualified and experienced with supporting young people in a safe way, whilst promoting individuals to achieve their personal goals.

Trust houses are registered Care Homes with the Care Quality Commission (CQC). They are inspected regularly and inspection reports are available on the CQC website.



Supported Internships

In addition to our full-time and residential programmes. We offer supported internships as a transition from college to full-time working.

You will spend most of your time working within a company that offers the work that interests you. Staff from the college will support you, helping you to settle in to your work placement. See our website for application process.

Short Breaks & Respite

If you are aged between 16 and 24 years and would like to learn to live independently, we offer flexible weekend and short breaks and respite to meet your needs. You can stay in one of our four houses and sometimes join existing residential students. Prices vary on length of stay.

Holiday Activities

We offer weekly workshops (including residential) through the holidays. These include: Dance, Art, Animal Care, Out-door Learning, Cooking, Gardening Club and many more.

Holiday workshops are for 14 – 24 year olds. Parents / carers or support works can accompany students.

Youth Club

The youth club is for young people aged between 14 – 24 years, to get together, have fun and make new friends. It is currently every Thursday in term time, 7 – 9pm. Come along and join the fun!

Partnership Working

We work with local schools and providers to offer a wide range of experiences from discreet courses, joining existing programmes and work experience as well as support to transition to college.

Open Days

We have regular open days for you and your families, to come and look around and meet the students and staff. Please see the website for upcoming dates:

www.ffc.ac.uk or call 01373 823028.

01

Please telephone the Admissions Manager Helen Beer on 01373 866066 or 07799907518, or email helen.beer@ffc.ac.uk You will be asked questions about you, your skills and support needs

04

During the assessment you will follow a timetable that allows you to try all the activities on offer at the college.

02

An informal visit can then be arranged to the College, where you can meet and see students at work.

05

We will then write to you to offer you a place or to explain why we feel that we would not be able to meet your needs.

03

If after this visit you think that this might be the right college for you, then you can apply for a place. You will need to fill out an application form and send it to us with information from your school and other professionals who you have worked with. College staff will read the information received and if the College feels it is able to fulfil your needs assessments will be arranged

06

The Education Funding Agency and Local Authority usually provides funding; SEND Lead workers, Social Workers and Personal Advisers can help with this.

Fairfield Farm College regrets that it is unable to offer places to young people who display really challenging behaviour which requires regular physical intervention. Staff at the college are unable to administer controlled medication. (Staff are able to administer Buccal Midazolam).



We are here for you and your family, to give every opportunity to use our wonderful facilities here at Fairfield Farm College.

OUR PAST STUDENTS

Gethin Williams



- I am doing well, living in Haverfordwest with another person in semi independent support living.
- I am occupied by doing some voluntary work 2 days a week with the National Trust in Stackpool. I also work on a poultry farm 2 days a week who supply free range eggs to Waitrose and top end restaurants in the country and on the 5th day I work in Frame (a charity who recycle furniture).

Robbie Baker



- Since leaving college I have moved into a nice house in Marlborough living with three girls.
- I am now working three days a week as a volunteer park ranger in Swindon, I travel to this independently on the bus. I also volunteers at the Dorothy House shop, ironing, steaming, putting out stock and helping people.

OUR PAST STUDENTS

Edward Stoner



- I am living in a supported living house in Salisbury with my friends Callum and Damen. I have a girlfriend called Danielle and love going to the cinema.
- I work at Oxfam and Barnardo's and on Fridays works in stables in Bruton. I am still interested in archaeology.

Sarah Perrett



- As I prepare to live in Melksham near my family next year I am currently living on the college STEP's to Independence programme in Pegasus House with other young people learning to travel independently, manage a home, work and to budget money and pay bills.
- I have voluntary work at Barnardos Charity shop in West-bury and hope to transfer to Melksham when I move next April.

John Knight



- I am living on the college STEP's to Independence programme in Pegasus House with other young people learning to travel independently, manage a home, work and to budget money and pay bills.
- I have paid work in the Fairfield Farm College Café and as part of the maintenance team at the college.
- I am studying English and Maths on the days I am not working.

Charlotte Henderson



- I live with my friend Dian from Critchill School in supported living in Frome.
- I work at the Hope Nature Centre on Mondays in the Animal Park and Tuesdays in the Café.
- On Thursday & Friday I have a paid job at Tesco's and I am travelling independently by bus from Frome to Shepton Mallet.
- I volunteer at Frome Hospital helping patients with eating and keeping them company.

Sophie Tarrant



- I am now living in supported living. I share a house with 2 other young ladies and am very happy.
- I work at the local charity shop one morning a week and go to the gym at least twice a week where I loves Zumba.
- I attend a literacy and numeracy session each week and attend social clubs.
- I have enrolled into a catering course for adults with learning difficulties and also a drama course.

Alex Marshall



- Going to be living in a renovated cottage with friends very soon in Knowle.
- Completing his last year at Moreton Morrell College where he is studying Small Animal Care 3 days a week.
- Attained Level 1 in Equine Studies and English & Maths level 3 last year.
- Work as assistant site manager at a school.



**A charity for the advancement of education, care and employment
of young people with learning disabilities**

Fairfield Farm College, High Street, Dilton Marsh, Wiltshire, BA13 4DL ☎: 01373 823028

